

# PERMIN

Scandinavian art needlework



1 □ = 1 □ in the fabric  
Count the design from centre of fabric

For this design please use  
Permin aida fabric. Item no.  
357 in colour 22 (357/22)

Work with split yarn = 2 strands

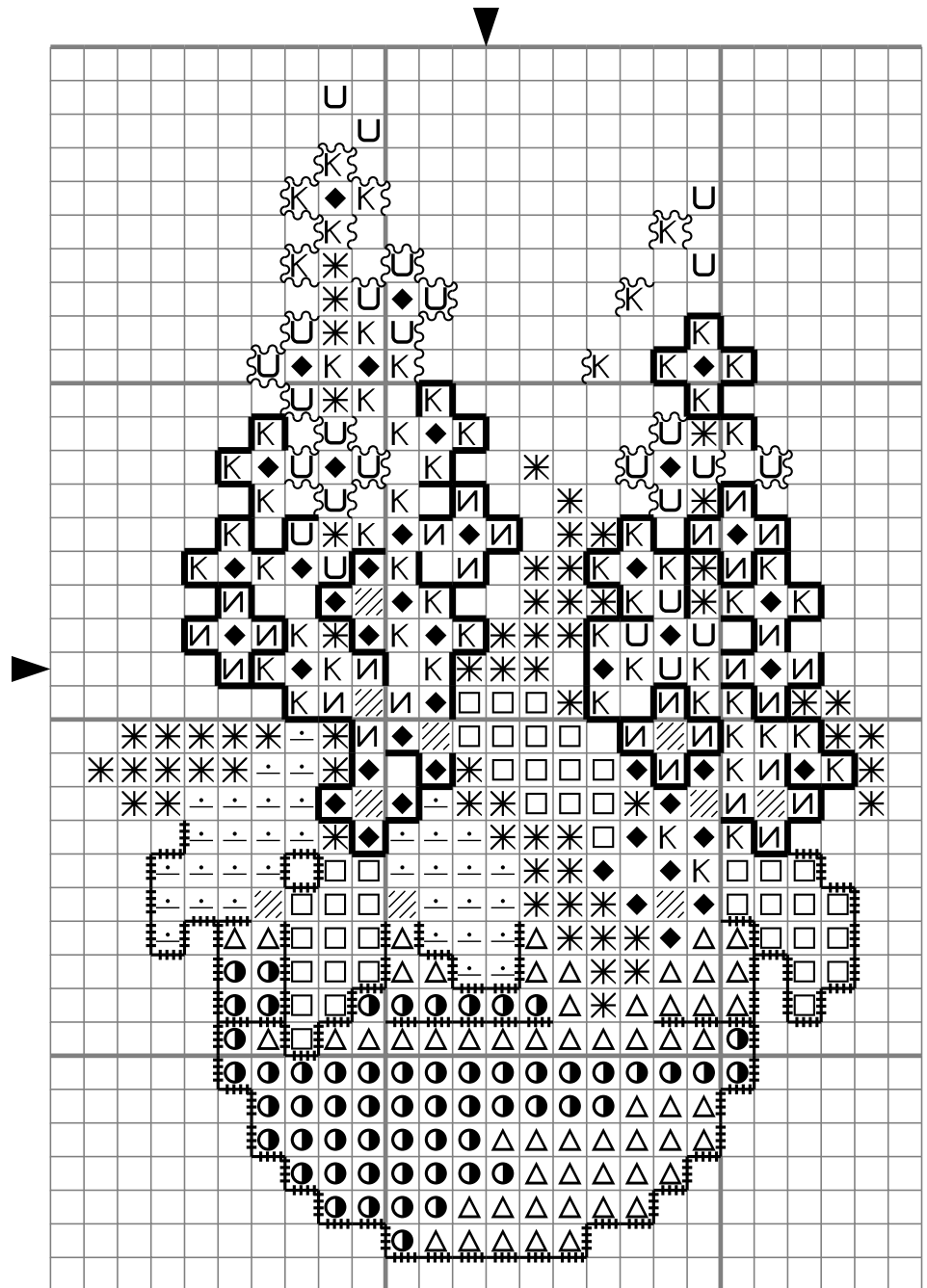
- U 3608. LIGHT RED
- K 553. LILAC
- N 155. BLUEISH LILAC
- ◆ 792. DARK BLUEISH LILAC
- ◻ 703. LIGHT GREEN
- ◻ 701. GREEN
- \* 3818. DARK GREEN
- △ 738. LIGHT BEIGE
- 3045. GOLDEN
- ▨ 310. BLACK

Cross stitches

Work with split yarn = 1 strand

Back stiches

- ~~~~~ 792.
- +++++ 3818.
- 310.



Made in Denmark©